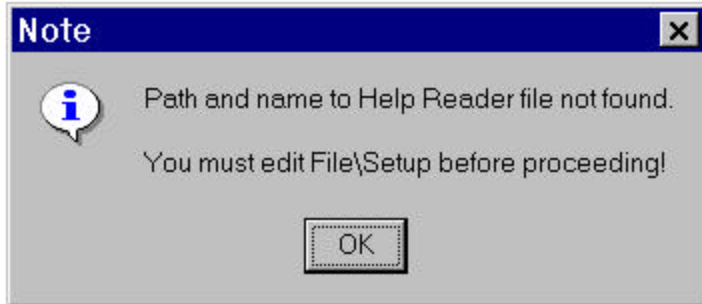
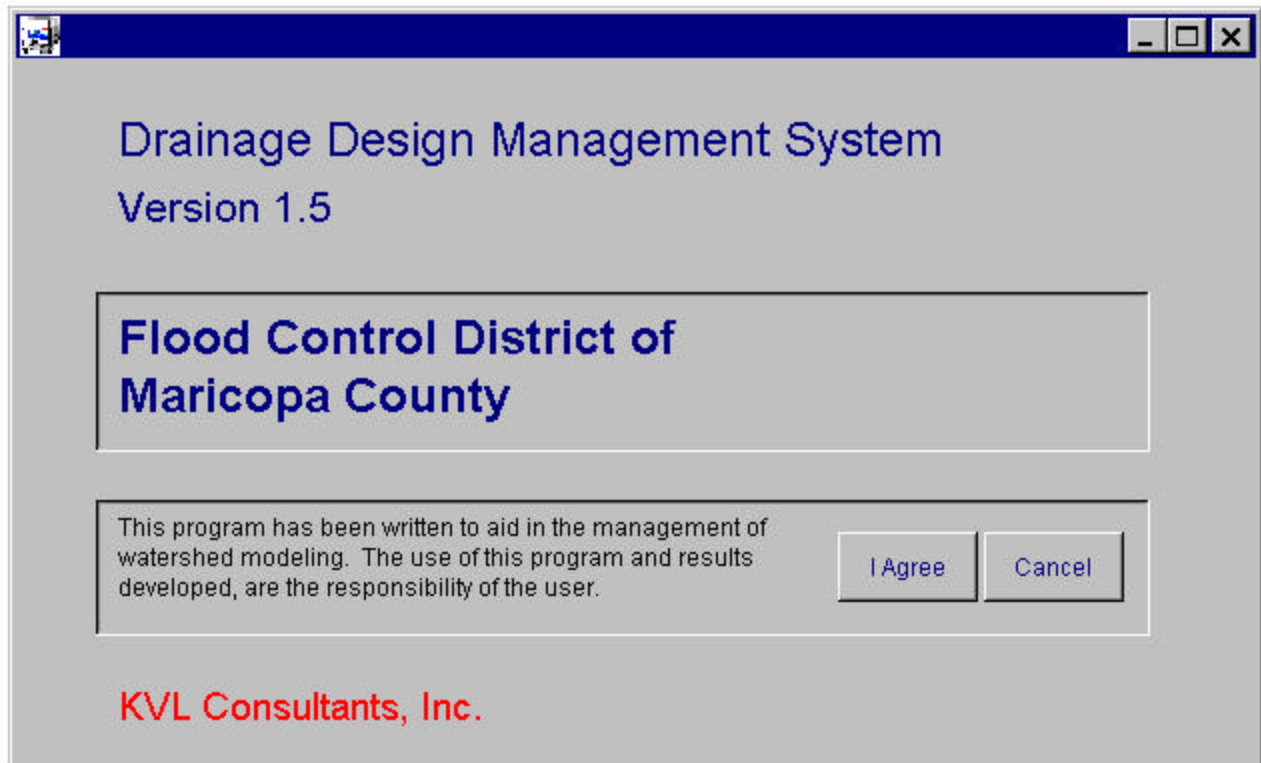


**Drainage Design Management System for Windows, Version 1.5  
Installation Instructions**

- 1) Insert the DDMSW CD in the CD drive (here denoted as X:). The CD contains an autorun file and installation should begin automatically. If not, from the Start menu, type X:\DDMSW\Setup at the RUN command (substitute your CD drive letter for X).
- 2) Follow the instructions on the screen. Once installation has finished, start the program by double-clicking on the DDMSW icon. You will receive the following message:

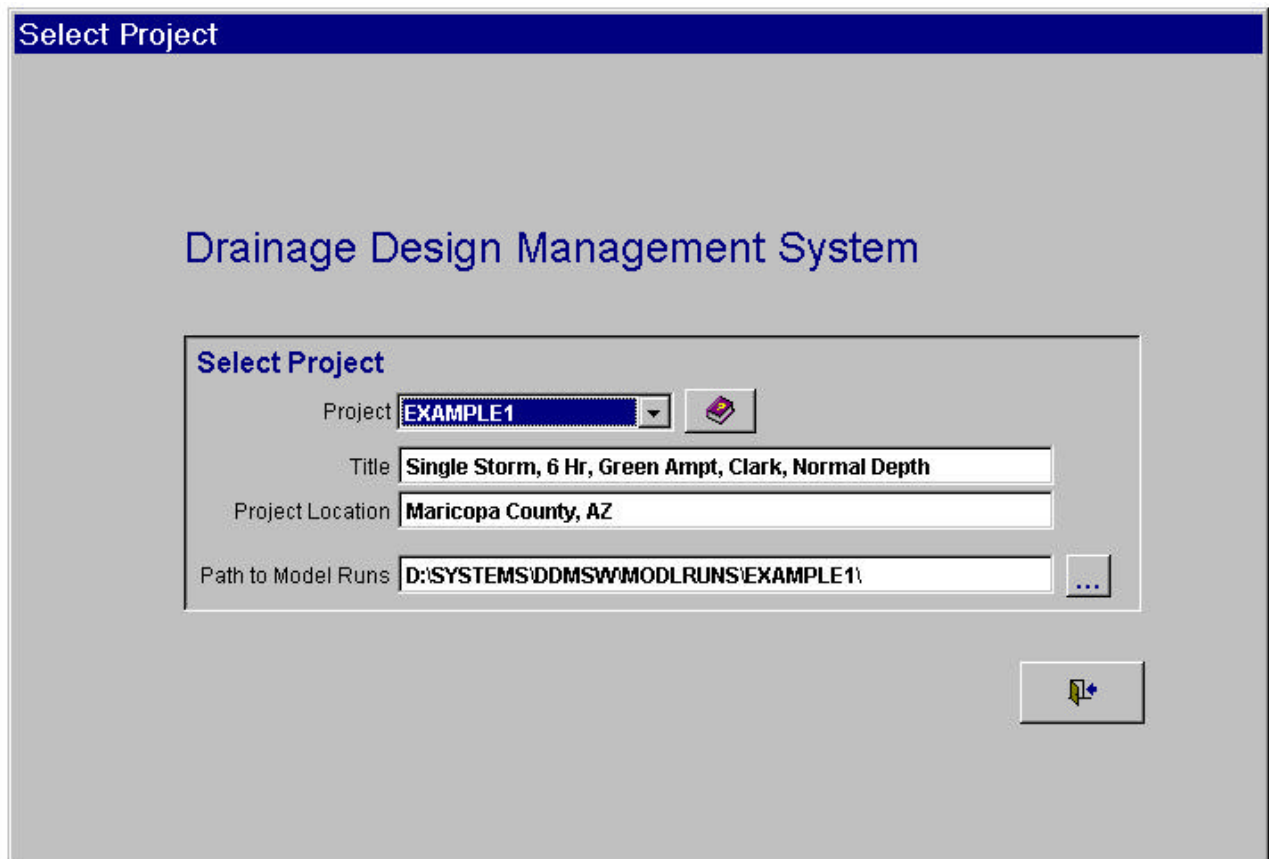


- 3) Click OK.
- 4) Next, you will see the following screen:



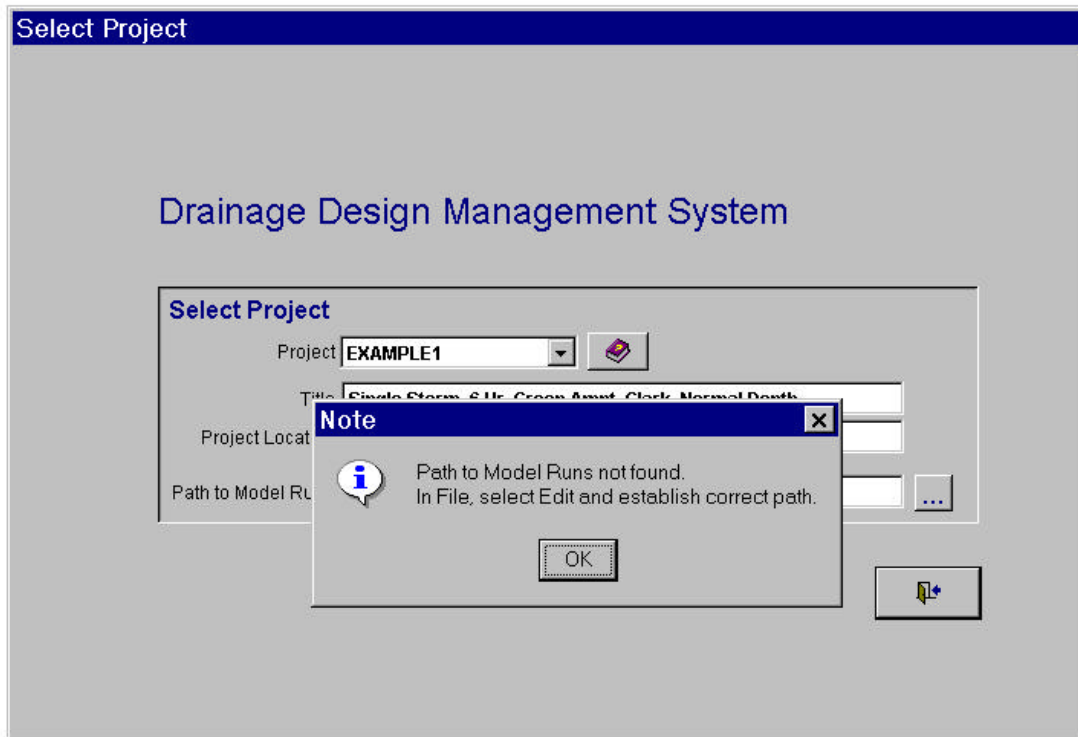
- 5) Click "I Agree".

6) Next, you will see the following screen:



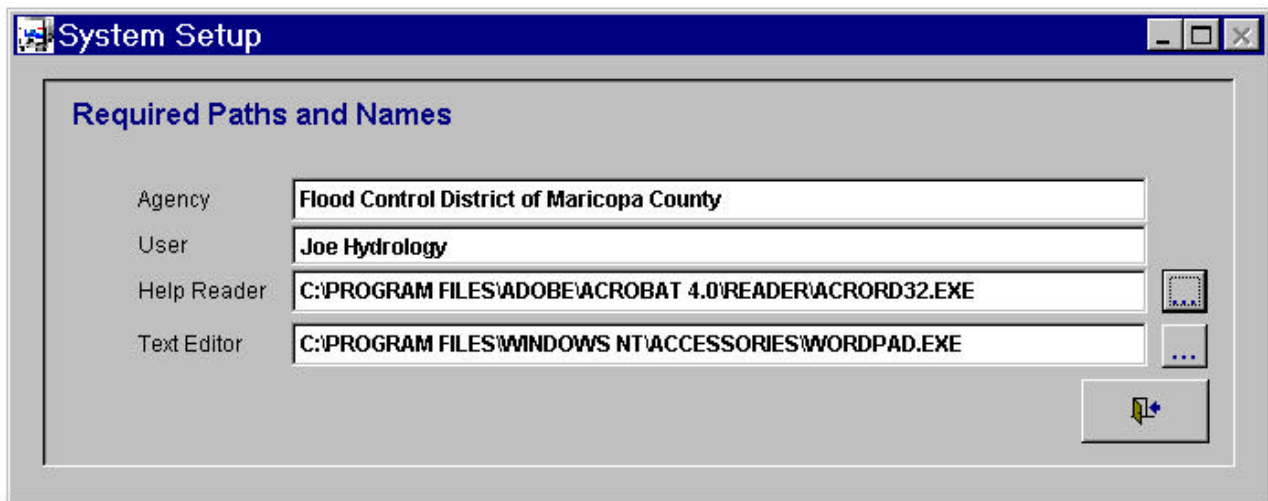
7) Click the Exit  button.

8) Next, you will see the following screen:



9) Click OK.

10) From the pulldown menus at the top of the main DDMSW screen, choose FILE | SETUP. You should see the following screen:



11) To use the DDMSW help files, you must have Adobe Acrobat installed on your system. Included in the DDMSW installation is the setup file for Adobe Acrobat 4.0, or you access the free download from [www.adobe.com](http://www.adobe.com).

- 12) **If you do not have the Adobe Acrobat Reader**, you can use the installation file that was included in the setup. Go to C:\DDMSW\ADOBE\ and run the setup file "rs40eng.exe" Once Acrobat is installed, type C:\PROGRAM FILES\ADOBE\ACROBAT 4.0\READER\ACRORD32.EXE in the Help Reader block, as shown in the above screenshot. Note: The exact path may differ from what is shown. If so, type in the correct path, or use the Browse option (the button with three dots) to find the correct path.
- 13) **If you already have Adobe Acrobat Reader installed on your system**, type in the correct file path in the "Help Reader" block, or use the Browse option (the button with three dots) to find the correct path.
- 14) Similarly, you must also define which text editor DDMSW should use (usually NotePad or WordPad) by typing the correct file path in the "Text Editor" block, or using the Browse button to locate the correct file. See above screenshot for example of using WordPad under Windows NT.
- 15) For detailed instructions on using the program, please see the User's Manual, which can be accessed through the HELP pull-down menu, or opened directly from C:\DDMSW\HELP\MANUAL.PDF.