



Maricopa Project Update Meeting

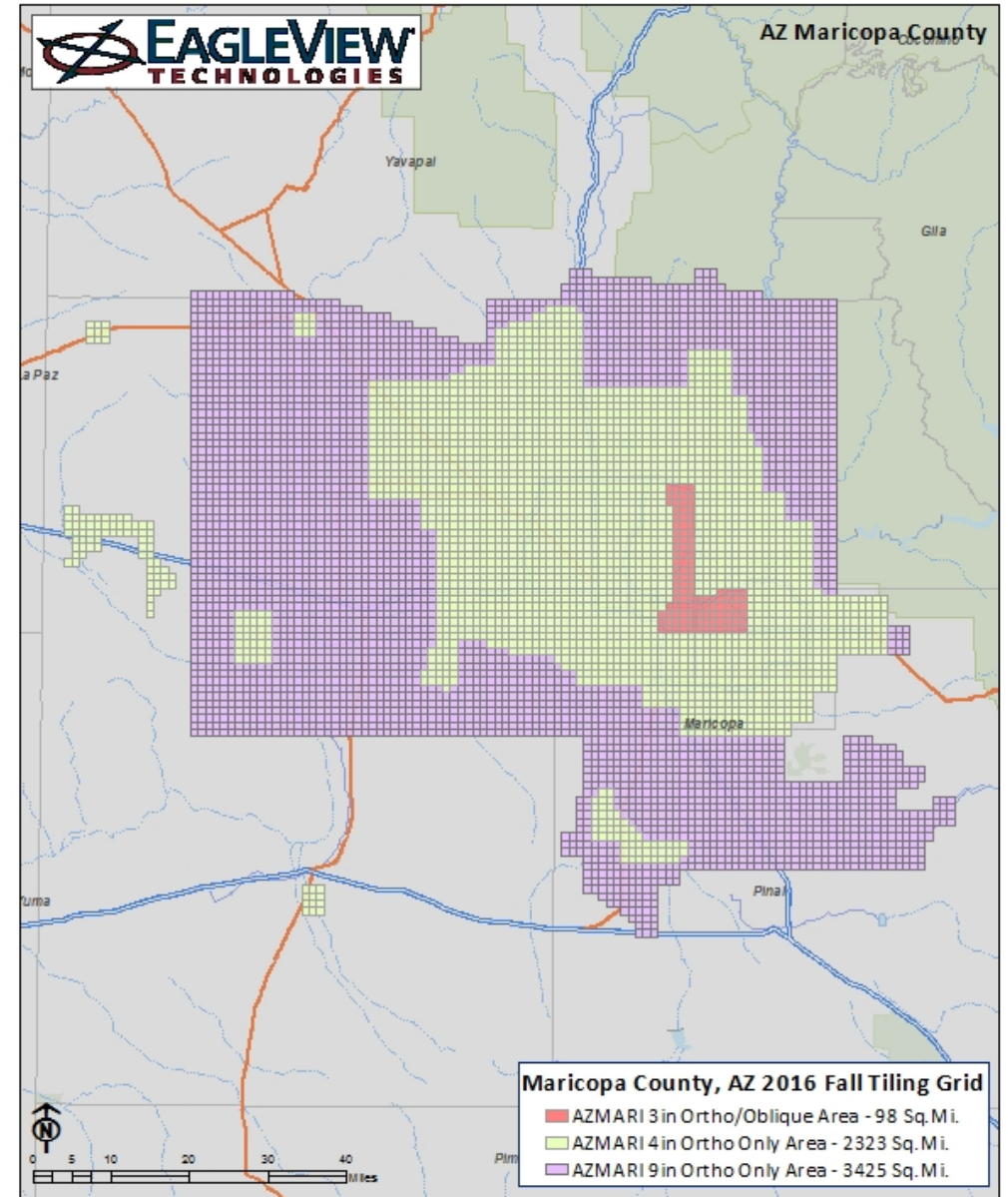
January 24, 2017

Bethany Choate
Project Manager



2016 Project details

- Digital Aerial Imagery
 - Orthogonal
 - 0.32' GSD – 2323 square miles
 - 0.8' GSD – 3425 square miles
 - Ortho & Oblique
 - 0.25' GSD – 98 square miles



2016 New Approaches – Efficiencies Gained

- Earlier flight start
- Order production blocks from inside-out
- Modification of internal production techniques to facilitate faster preliminary delivery via Connect
 - Preliminary orthomosaics and individual frames via IPA



Imagery Project Breakdown

- Task 1: Survey Planning
 - Flight Planning & Ground Survey
- Task 2: Data Acquisition
 - Flight Management Team
- Task 3: Data Processing
 - POS – GNSS/INS
- Task 4: Orthophoto Production
 - Aerial Triangulation
 - Orthorectification
- Task 5: Delivery Preparation



Current Status

- Hard drive delivery of preliminary 0.32' and 0.8' ortho tiles was completed January 13.
- Final (AT'd and manually corrected) orthomosaic tiles for the 0.25' GSD areas had completed ahead of schedule and have been delivered.
- All frame imagery and preliminary orthos are now available via Pictometry Connect and Image Service.



Current Status

- 0.25' Ortho and oblique area – Complete!
 - Capture (including reflys) has completed.
 - Individual frame library has been delivered.
 - Frames fully available via Pictometry Connect.
 - AT has completed ahead of schedule.
 - Image corrections have completed ahead of schedule.
 - Final orthomosaic tiles have shipped.



Current Status

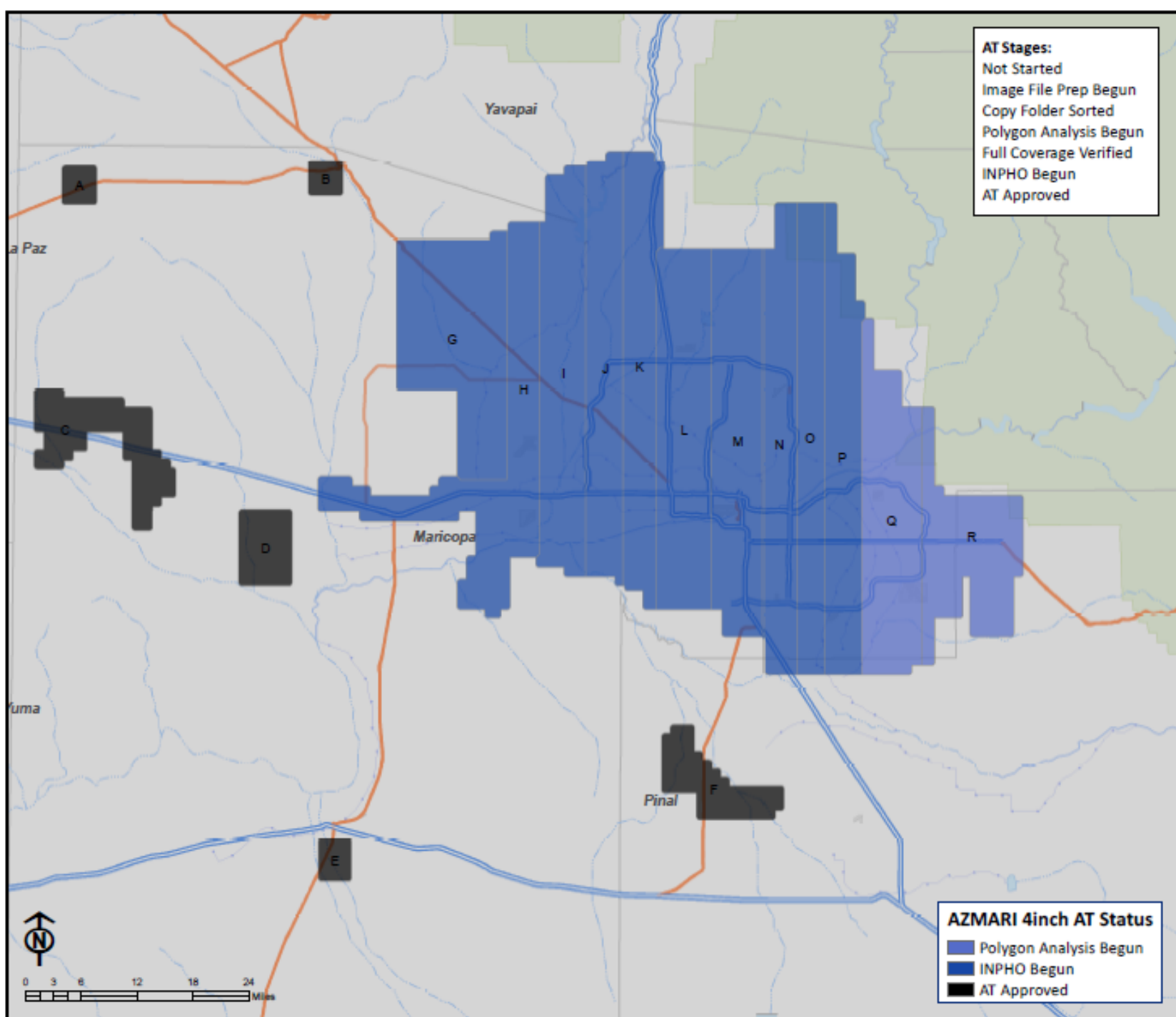
- 0.32' Ortho -
 - All flights are now complete.
 - Frames fully available via Pictometry Connect.
 - Because of some ATC delays with flights, initial tile completion dates were extended by two weeks
 - AT is underway.

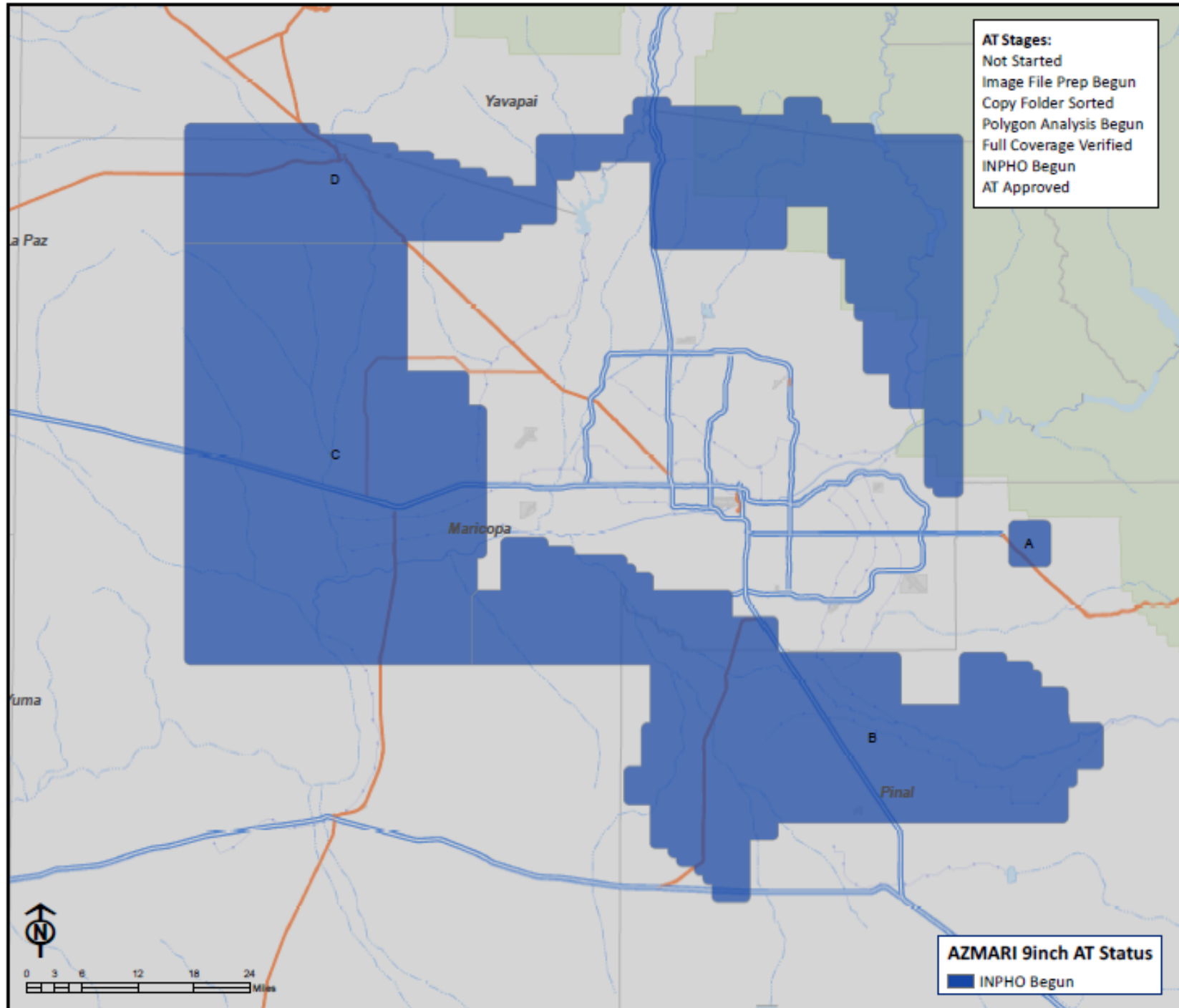


Current Status

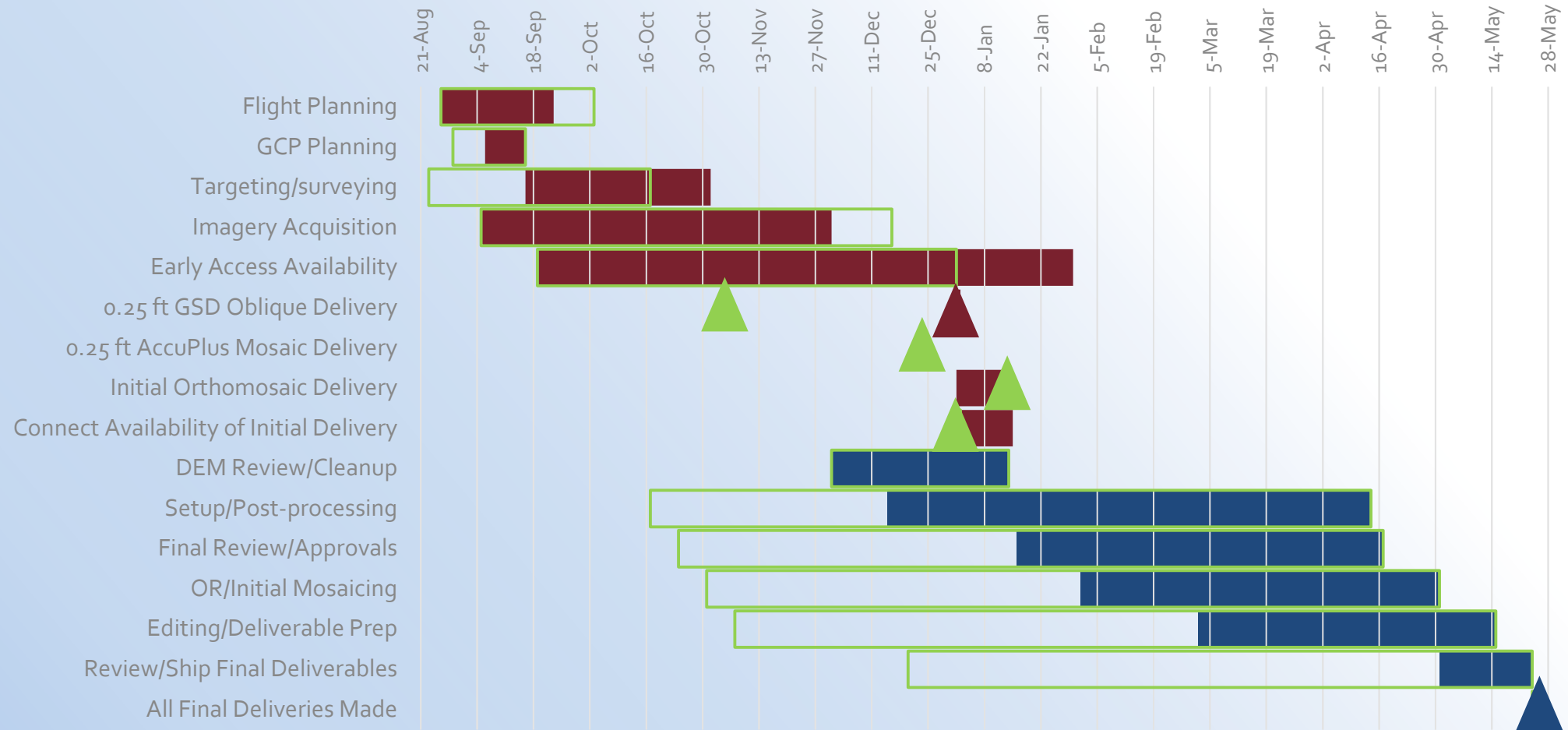
- 0.8' Ortho -
 - All flights (including reflys) are complete.
 - Frames fully available via Pictometry Connect.
 - AT underway.







Updated 2016 Project Timeline



Note: Future dates represent best available projections. Capture dates are pursuant upon favorable weather and Air Traffic Control conditions; processing dates assume availability and usability of necessary supporting data. Delivery dates are best available estimates and subject to change.



Action Items

- MrSID formatting
 - Will be producing TILED MrSIDs this year for each consortium delivery
 - Image Service to be leveraged for area-wide
 - Faster and less error-prone
- Global Color Balancing
 - Pictometry performs global color balancing
 - Color adjustment, if necessary, is performed on a global level as a final step
 - Please note, it is not technically possible to perfectly match different GSDs
 - 4" and 9" can not perfectly match
 - Limitation due to radiometry, technology
 - Physical orthomosaic delivery only; will not be added to Connect or applied to frames
 - Samples?



Thank you!



Bethany Choate

Project Manager

bethany.choate@eagleview.com

585-444-2617

